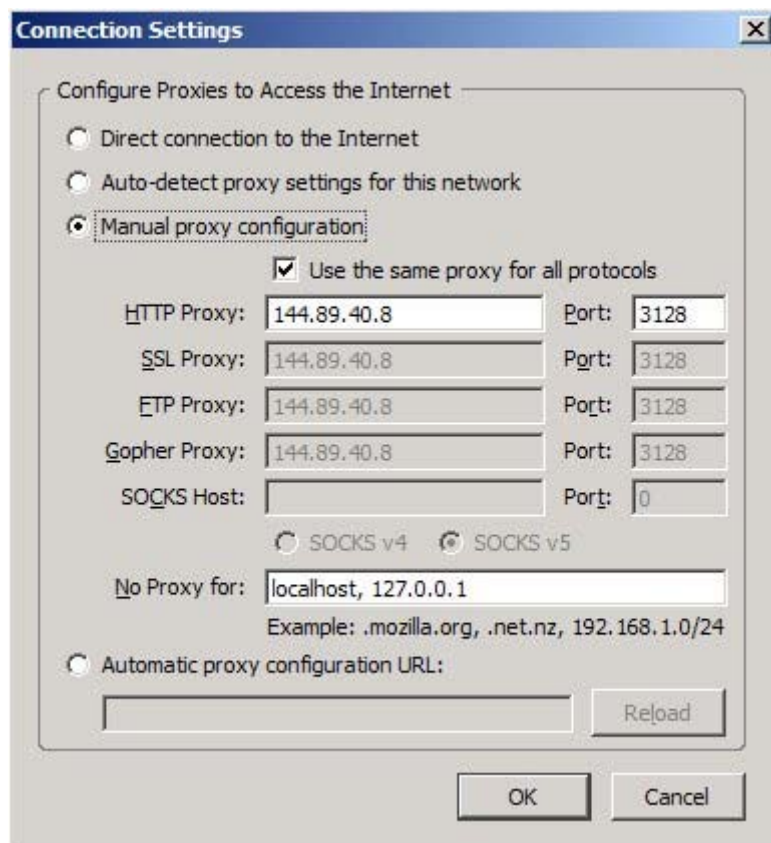


The proxy server is for students, staff, and faculty of Beloit college who wish to view campus-restricted pages from off-campus. After you have enter the configurations for any of the three browsers below, you will have to use your username and password to authenticate your identity.

Note on web browsers: These instructions exemplify I.E. 6.0 and 7.0 as they are the most popular browsers. However, most other browsers and earlier version browsers have proxy configuration capabilities. Simply find where the proxy setting is kept for your browser and extract from the examples below for your settings.

---

## Mozilla Firefox



Select the *Tools* Menu

Select *Options*

Select *Advanced*

Select *Network*

Select *Settings* button

Select *Manual Proxy Configuration*

Check *Use the same proxy for all protocols*

Enter 144.89.40.8 for the HTTP Proxy

Enter 3128 for Port  
Click *Okay*

**IMPORTANT!!** Be sure to return your browser settings to "direct internet access" when you are finished accessing pages required by the proxy. If you do not, your internet access will be drastically slowed down by the proxy.

To switch your browser back to normal settings follow the same steps as above with the change below.

Instead of selecting *Manual Proxy Configuration* Select *Direct connection to the internet*

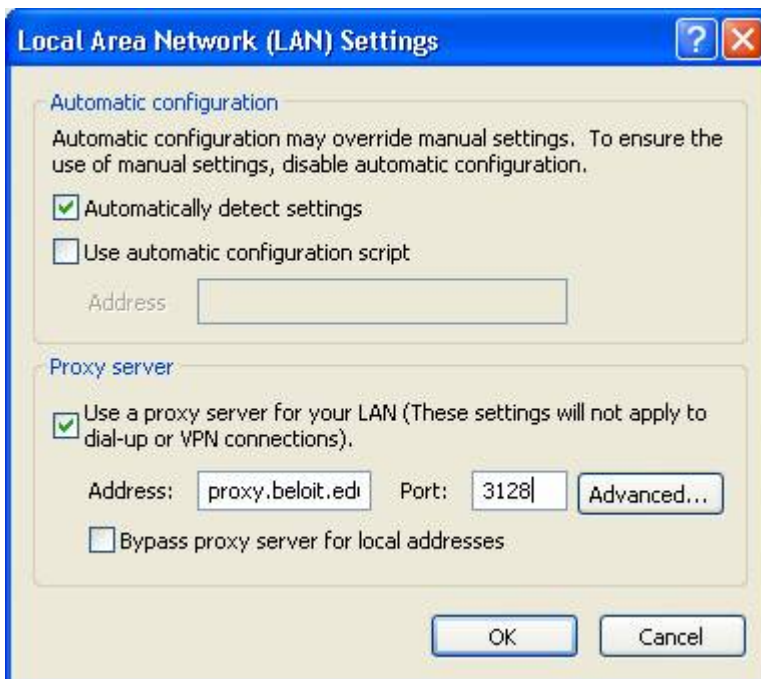
---

## IE 6.0 & 7.0



Select the *Tools* menu option  
Select *Internet Options*  
Click on the *Connections* tab

Click on *LAN Settings* OR Double click on your modem configuration in the Dial-up and Virtual Private network settings box if using a modem or another dial-up device.  
Select Use a proxy server for your LAN (or the connection you are using )  
Type in your hostname in the *Address:* field (proxy.beloit.edu), and your chosen port in the *Port:* field (3128).



**IMPORTANT!!** Be sure to return to your browsers settings to the normal settings when you are finished accessing pages required by the proxy. If you do not, your internet access will be drastically slowed down by the proxy.

To return to normal settings

Select the *Tools* menu option  
Select *Internet Options*  
Click on the *Connections* tab

Click on *LAN Settings* or Double click on your modem configuration in the Dial-up and Virtual Private network settings box if using a modem or another dial-up device.  
Deselect *Use a proxy server for your LAN*